



M/S RYHOLM

Das Schiff das 2 mal sank / The ship that sank twice



Reg: 9252

Byggd: 1951

Varv: GV, Landskrona

DW: 2.910

BR: 1.780

Knop:12,5

Mått: 77,3 x 12,9 x 5,0

Byggd för AB SVENSKA ORIENTLINIEN (BROSTRÖMS), Göteborg. **M/S ROLAND.**

Såld 1951 till SVENSKA AMERIKA LINIEN. **M/S RYHOLM.**

Sjönk 1952 efter kollision i St. Lawrencefloden. (M/S BASILEA)

Fartyget bärgades och bogserades till Oskarshamns Varv för istandsättning.

Återlevererad 1954.

Kolliderade 1956 i Elbemyningen (S/S SOTTEVILLE). Vraket bärgades och bogserades till Helsingborgs Varv för istandsättning.

Omdöpt 1958 till **M/S CARLSHOLM** i samband med återleveransen.

Förlängd 1960 vid Wärtsilä med 23 meter. Nya data DW: 3.625 BR: 2.028

Såld 1967 till ASTROVALEDOR CIA NAV, Grekland. **M/S ARCHON.**

Upphuggen 1972 i Spanien efter att ha spungit läck 1971.

<http://kommandobryggan.se/sallast/ryholm.htm>

RYHOLM was a small Swedish freighter (1,733 tons) built in 1951 for Sweden America Lines. In 1952, carrying a cargo of cars, she was rammed on her port side ahead of the bridge by the Swiss freighter **BASILEA** (cutting a gaping hole about 48' in length) and sank on an even keel in 30 feet of water (at low tide) on the St. Lawrence River, about 31 miles below the city of Quebec. This location is subject to tides of between 19 and 23 feet, and she alternated between having only the top of her superstructure and her decks visible. This gave the salvors between 1 and 3 hours per day when work was possible. Apparently the first attempt to salvage her was unsuccessful, with a wooden patch built to cover the gaping hole in her side. She therefore had to wait until the next spring, in 1953, before being refloated; the wood patch was replaced with a more robust steel patch at that time. She was refloated on June 6, 1953, and was delivered to a drydock for repairs on June 20. Ice in the river seems to have scraped much of her paint off during the winter. After being salvaged, she was repaired and returned to service.

Save 38 as Crash Sinks Swedish Ship Near Quebec

Special to The Star

Quebec, Oct. 31—All 38 members of the crew of the Swedish-American Line cargo vessel, Ryholm, were reported rescued early today after the 1,733-ton freighter collided with the Swiss freighter Basilea. The Ryholm sank in 25 feet of water in the outside channel of the St. Lawrence, 30 miles below the city.

First reports said some crew members were injured, but the department of transport's shipping office here said it knew of no one hurt. An official said the ice-breaker, N. B. McLean, inbound after an Arctic trip, the Basilea, and a schooner had picked up the crew of the Ryholm. The stern of the freighter is showing above water.

Shipping in the river will not be

Continued on Page 2, Col. 4



WITH GAPING HOLE IN PORT SIDE, SWEDISH CARGO VESSEL RYHOLM SINKS BENEATH SWIRLING WATERS OF ST. LAWRENCE.

1952: The Swedish vessel RYHOLM was hit portside ahead of the bridge by the Swiss freighter BASILEA and beached 23 miles below Quebec City. The former had been a pre-Seaway visitor to the Great Lakes and was not salvaged until June 6, 1953. It became CARLSHOLM in 1957 and last came inland in 1967. The ship was scrapped at Aviles, Spain, as d) ARCHON in 1972.

Save 38 as Crash Sinks

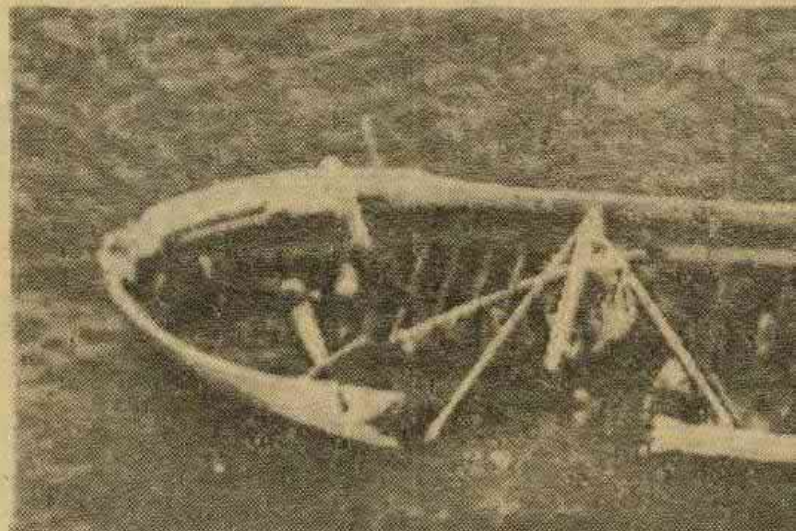
Special to The Star

Quebec, Oct. 31—All 38 members of the crew of the Swedish-American Line cargo vessel, Ryholm, were reported rescued early today after the 1,733-ton freighter collided with the Swiss freighter Basilea. The Ryholm sank in 25 feet of water in the outside channel of the St. Lawrence, 30 miles below the city.

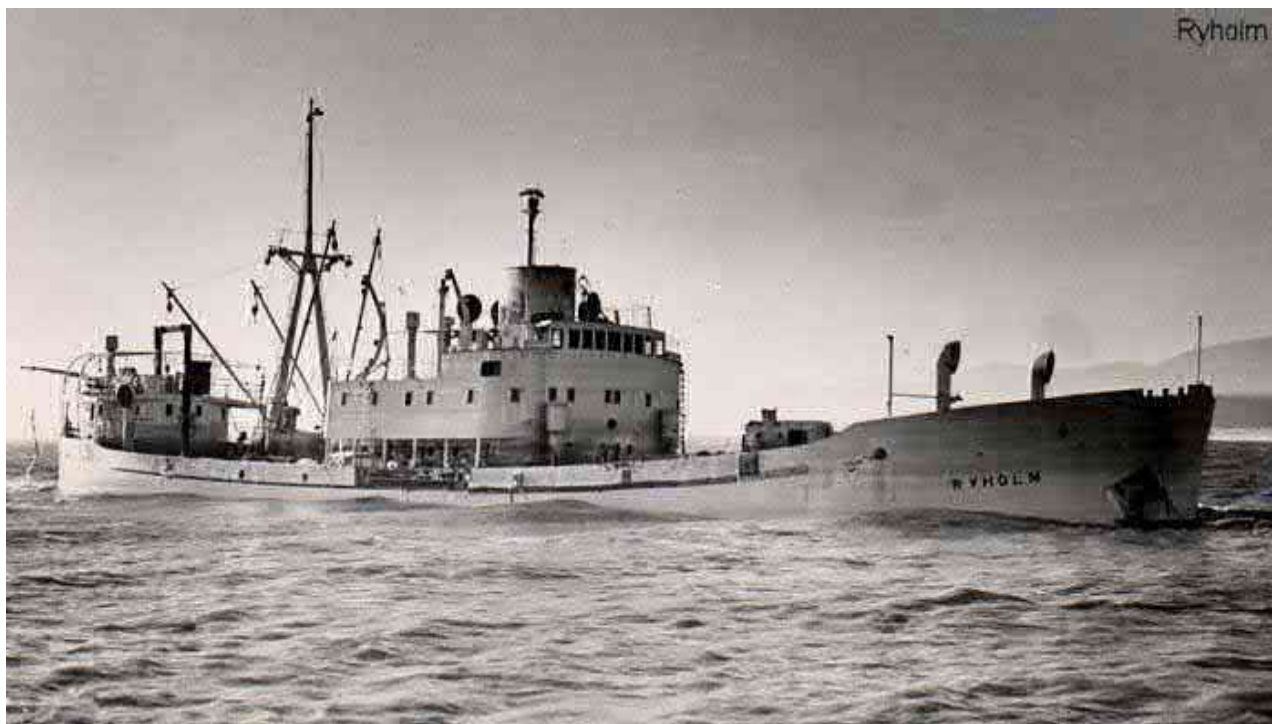
First reports said some crew members were injured, but the department of transport's shipping office here said it knew of no one hurt. An official said the ice-breaker, N. B. McLean, inbound after an Arctic trip, the Basilea, and a schooner had picked up the crew of the Ryholm. The stern of the freighter is showing above water.

Shipping in the river will not be

Continued on Page 2, Col. 4



WITH GAPING HOLE IN PORT SIDE, SWEDISH



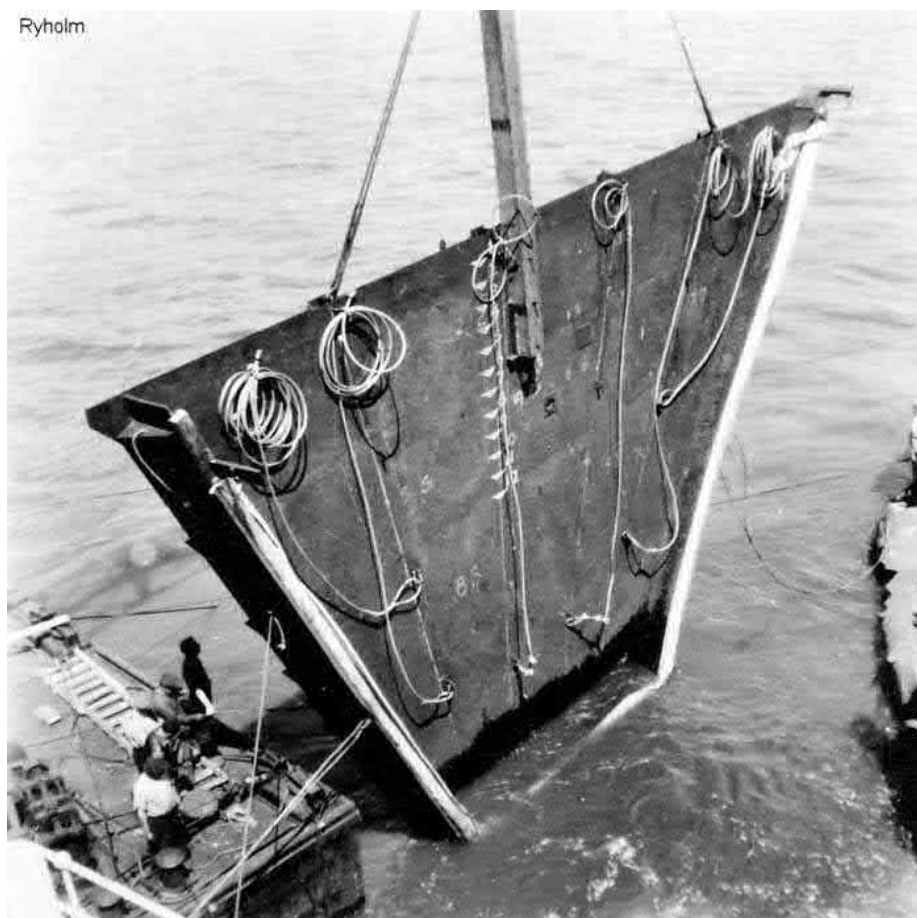
1. *Ryholm* soon after the collision, perhaps not completely settled on the bottom.



2. Now fully sunk, and presumably at high tide, only the top of her bridge is visible above the water.



3. The following spring, with ice still in the river, Foundation tugs return to try again



4. The new steel patch is lowered into place



5. A diver prepares to enter the hold. He appears to have headphones for an underwater radio system.



6. The bow of *Foundation Frances* peaks around the edge of the bridge superstructure. The same diver from the previous photo is visible



7. *Foundation Frances* stands by *Ryholm*.



8. The new steel patch in place, pumping begins to refloat *Ryholm*.



9. *Ryholm's* cargo of cars has been covered in sediment during their time underwater. It is doubtful the cargo was worth anything after being underwater for so long.



10. Flanked by *Banscot* (left) and *Foundation Josephine II* , the refloated *Ryholm* is prepared for the tow



11. With the hired Davie tug *Manoir* in front, the tow begins



12. *Foundation Josephine II*, *Ryholm*, and *Banscot*.



Swedish Freighter Sinks After Elbe River Crash

CUXHAVEN, Germany (AP) —
The 1,733-ton Swedish freighter Ryholm sank in the Elbe River today after being in collision with the 3,621-ton French vessel Stotleville during a dense fog.

The Ryholm's crew of 25 was rescued.

The Ryholm was en route from a Canadian port to Hamburg. The French freighter was bound for Rotterdam.

11.10.1956 collision with S/S SOTTEVILLE (3,626 / 1948) later refloated and repaired

