

MS «HANSE»



King of the Seas

on your own course



This yacht is managed and operated by

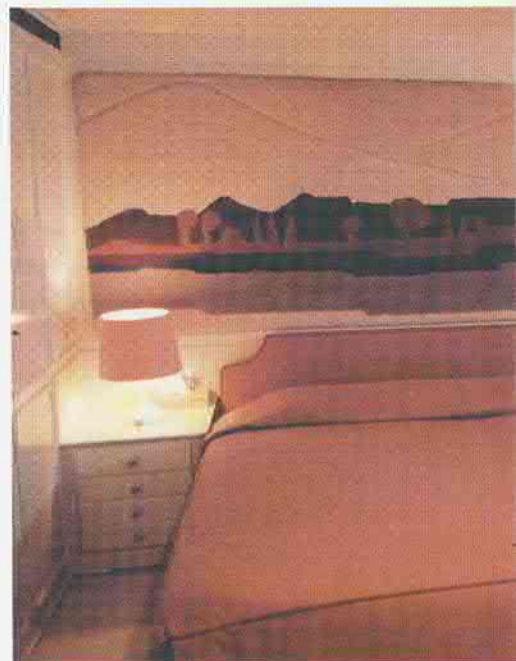
SUISSE-OUTREMER REEDEREI AG
(Swiss Overseas Shipping Limited)
Winterthurerstrasse 92, CH-8033 Zurich, Switzerland
Phone: 363 49 52, Telex: 53920



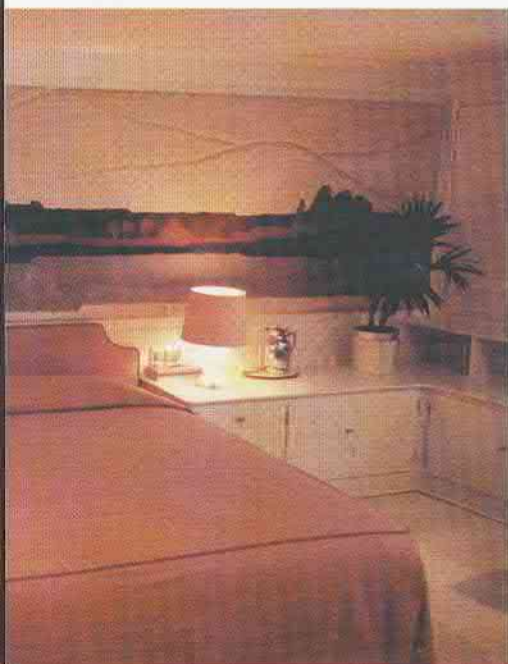
M/Y "HANSE" is a newcomer on the international yachting scene with a design carefully balanced between elegance and comfort on the one hand and safety and seaworthiness on the other. The yacht will appeal to the most discriminating tastes - for private leisure cruises, floating conferences, or for any other purpose afloat.

M/Y "HANSE" was built by highest standards of European craftsmanship in shipbuilding, engineering, seamanship and dignity of style as regards accommodation and comfort. The yacht is equipped with the latest technology in propulsion, navigation and communication. She is built for world-wide cruising. She will sail to any destination, and her guests will always be able to get in touch with any spot on the earth - by phone or by telex via satellite communications.

Steering M/Y "HANSE" on your own course you will experience the sea in an unmatched fashion both in respect of perfection and closeness to nature. Wherever you go and wherever you drop anchor, you will truly be a king of the seas.



Living Aboard



The cabins offer a perfect blend of maritime comfort and the luxury afforded by large cruise liners. Living in these surroundings is a joy.

There are double as well as single-bed cabins and of course they are all provided with private baths/showers, radio, telephone, etc. Their styling and colours will appeal to all who look for the outstanding.

Taking a bath in your private bath tub is no luxury - a special desalination plant is provided aboard for ample fresh water supply.

The freshness and light of the sea are reflected in the dignity of styling, distinction of colors, in the exquisite materials used and the elegance of the furniture. All social events from breakfast to mid-night buffet, morning cocktails to a dinner party can be comfortably arranged in the impressive suite of rooms on the main deck, including reception hall, dining room and bar.

Service rooms are located such as to ensure prompt attention. Needless to say, these rooms may also be used for business meetings, conferences and receptions. The many and varied

possibilities of this yacht will always provide a perfect setting for your particular purposes.

M/Y "HANSE" is superbly appointed in every respect. Her spacious living room easily seats 25 guests, her dining room will accommodate 12-16 dining guests in comfort, and for cocktail parties she may well be spacious enough for 50 people. Her main salon is finished in light oak and has a built-in music center along with multi-system color TV units and a complete video film library.



The Ship

"HANSE" is a multi-purpose ship affording the classic elegance of a luxury yacht and the comfort and safety of a large cruise liner.

The latest state of the art in building fast ocean-going ships is reflected throughout the yacht. "HANSE" satisfies the most stringent safety requirements and fulfils all the seaworthiness regulations prescribed for world-wide voyages.

Transoceanic crossings are routine for this yacht as she normally cruises the Mediterranean in the summer and the Caribbean and Florida in the winter.

"HANSE" is equipped with the most modern electronics in communication. She is in constant touch with various points on earth through her MARISAT satellite communication center aboard.

The yacht is geared with 2 radars, Loran C, MAGNAVOX satellite navigation system, and she also has a weather faximile printer giving precise weather forecasts in clear print.

To guarantee expert handling of the yacht and its sophisticated installations "HANSE" is staffed by a crew of first-class multi-lingual European professionals.

